



How to flash a software in the Poclain Hydraulics displays?

Thank you for buying Poclain-Hydraulics parts!

You just received the Poclain Hydraulics CR0451 / CR0452 display & it need to be programmed in order to take the full advantage of this product.

This document describes “How to download a software in the Poclain Hydraulics display?”

Table des matières

1. Unzip downloaded embedded software file	4
2. Load the configuration for Maintenance Tool	5
3. Check configuration.....	7
4. Browse after the embedded software	8
5. Software downloading	10
6. Browse & Download translation file	11
Documentations	15
Support.....	15
Download Center	15

Note: A web access could be a better way in order to download software from the Poclain hydraulics download center web site.

In accordance with its policy of continuous improvement, Poclain Hydraulics reserves the right to modify the specifications of all products described herein without prior notice.

*The illustrations are not contractual.
©Poclain Hydraulics Industrie 2007.*

The trademark Poclain Hydraulics is the property of Poclain Hydraulics S.A.

*Maintenance Tool© is the property of IFM Electronic GmbH Company.
CR0451 & CR0452 are the property of IFM Electronic GmbH Company.*

This document is the property of Poclain Hydraulics Industrie. It is strictly confidential. It must not be used, duplicated, copied or disclosed to a third party in full or in part without our prior written consent.

Maintenance Tool



Download the Maintenance Tool on the Poclairn Hydraulics Download Center:

<https://phases.poclairn-hydraulics.com/downloadcenter/>

↳ Display menu

↳ Maintenance Tool



- Unzip the downloaded file.
- It should contains:
 - o “Setup.exe” executable file.
 - o “Release_Notes_Maintenance Tool.pdf” pdf help file.
 - o “Dependencies” folder.

Dependencies	05/12/2019 09:59	Dossier de fichiers	
Release_Notes_Maintenance Tool.pdf	20/11/2019 11:02	Adobe Acrobat D...	843 Ko
<input type="checkbox"/> Setup.exe	20/11/2019 11:02	Application	30 559 Ko

- Double click on the Setup executable file
- Then, follow the procedure of the installer.

Embedded software



Download the embedded software depending your display & your application on the Poclairn Hydraulics Download Center:

<https://phases.poclairn-hydraulics.com/downloadcenter/>

↳ Display menu

↳ Two kind of display:

- Poclairn Hydraulics CR0451
- Poclairn Hydraulics CR0452

Three kind of applications:

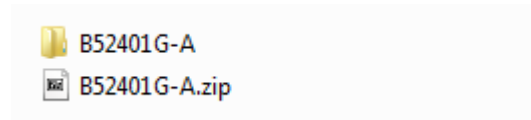
- Poclairn Hydraulics Hydrostatic transmission
- Poclairn Hydraulics Offroad system
- Poclairn Hydraulic Assist system

1. Unzip downloaded embedded software file



Remark: The Maintenance Tool can be used for many devices, but Poclairn Hydraulics supply on the Download center a basic configuration for his customers in order to save time. This configuration allows pre-configuring the Maintenance Tool to avoid any mistake.

A XxxxxxX-X.zip has been downloaded from the Poclairn Hydraulics Download center which corresponding to your display & your application. Then unzip it.



It should contains:

- XxxxxxX-X.csv: translation file
- XxxxxxX-X.md5: embedded software checksum
- XxxxxxX-X.resx: embedded software application

Example:

B52401G-A.csv	Fichier CSV Micro...	2 Ko
B52401G-A.md5	Fichier MD5	1 Ko
B52401G-A.resx	Microsoft .NET M...	2 659 Ko

Nota: XxxxxxX-X means Poclairn Hydraulics software Part/Number and could be differed depending display & application.

2. Load the configuration for Maintenance Tool

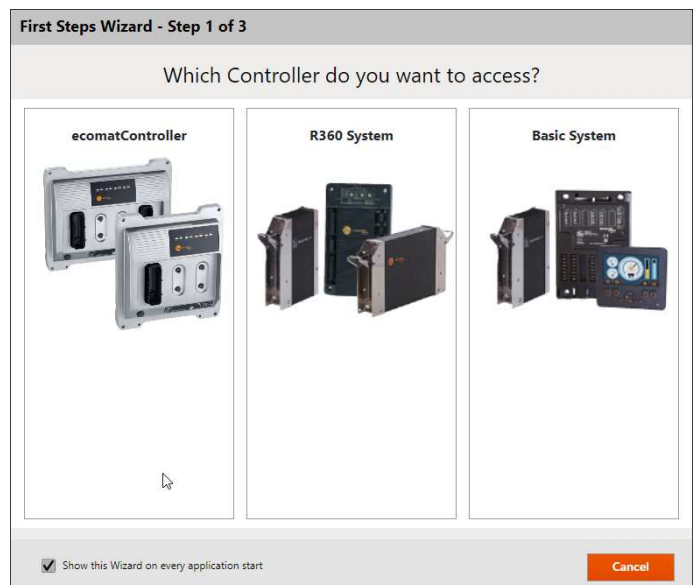


Remark: Before execute *Maintenance Tool*; please connect the *PEAK USB-CAN device (A48780W – CABLE-USB-CAN-CONVERTER)*.

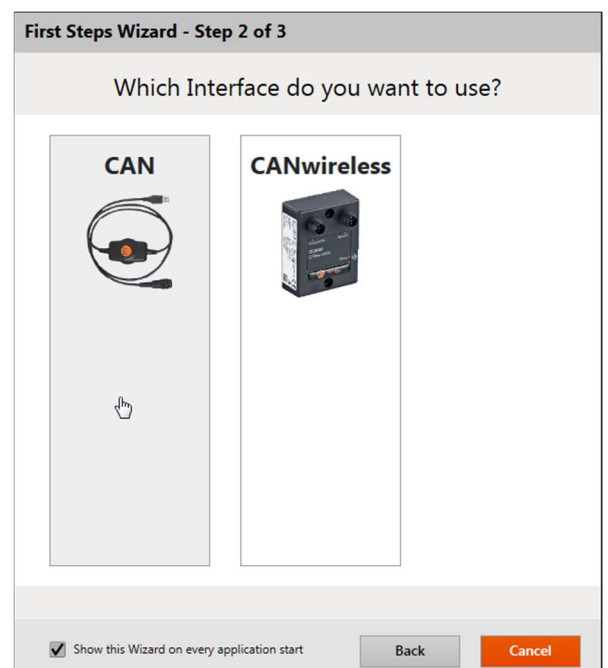
After connecting the PEAK USB-CAN device, please execute the Maintenance Tool software.



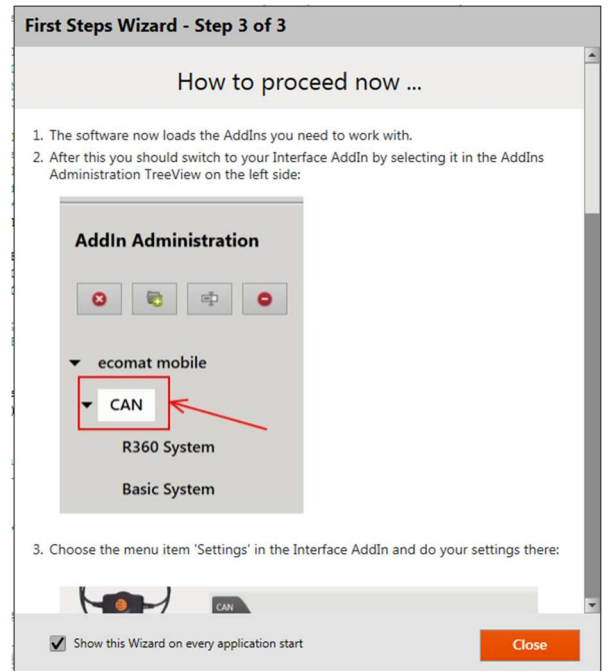
Once Maintenance Tool is executed, on the first step wizard, select the “Basic System” module:



On the second step wizard, select “CAN” module:

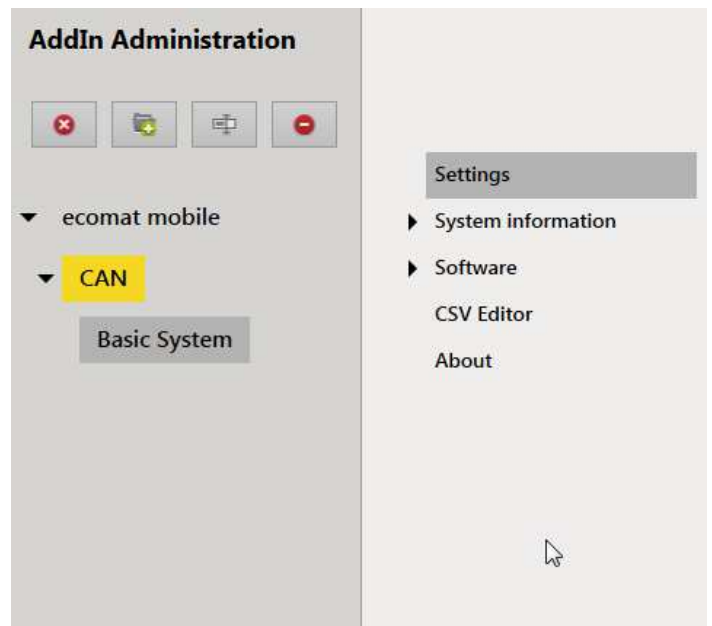


On the third step wizard, click on “Close” button.



Check that all the AddIn has been correctly imported/loaded.

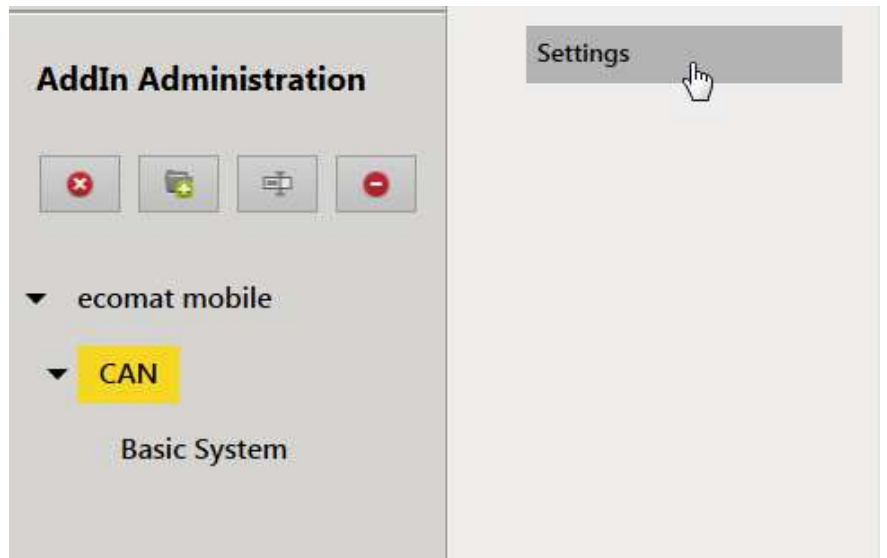
You should have “CAN” AddIn menu & “Basic System” AddIn menu:



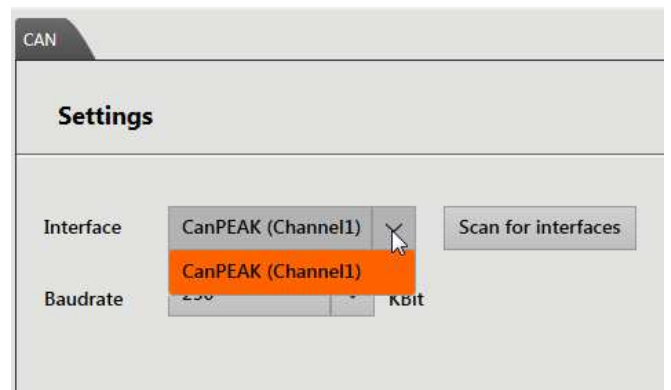
3. Check configuration

Click on “CAN” AddIn.

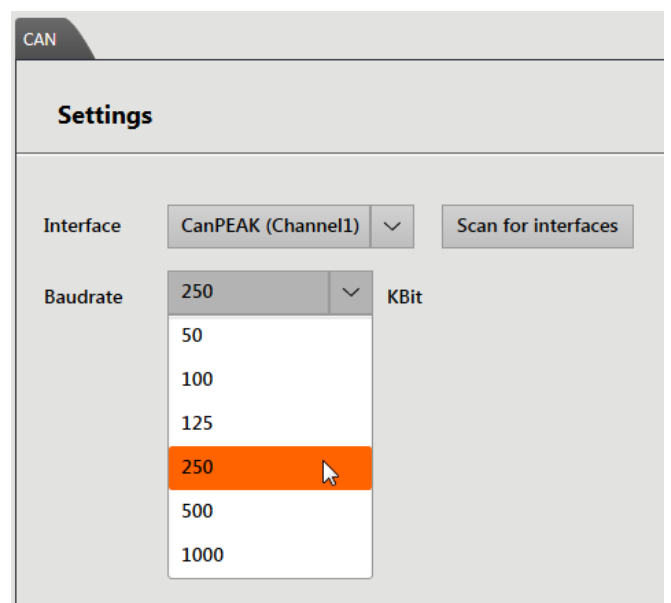
Then click on “Settings”



Check that the **CanPEAK (Channel x)** has been correctly selected. Else, please click on “Scan for interfaces” in order to find the connected CAN device.

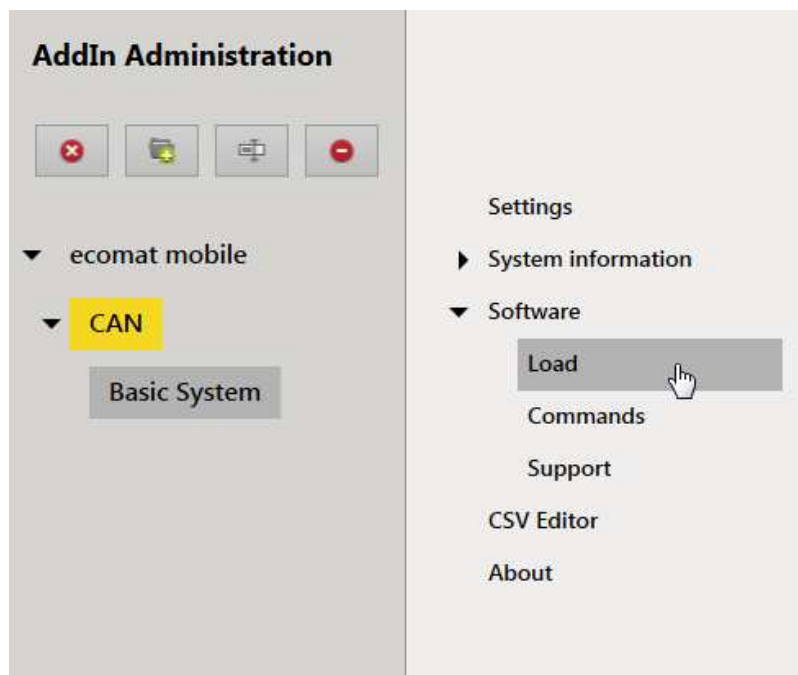


Check that the Baudrate has been selected at **250 Kbit** by default. Else, click on the drop-down selector and select it.

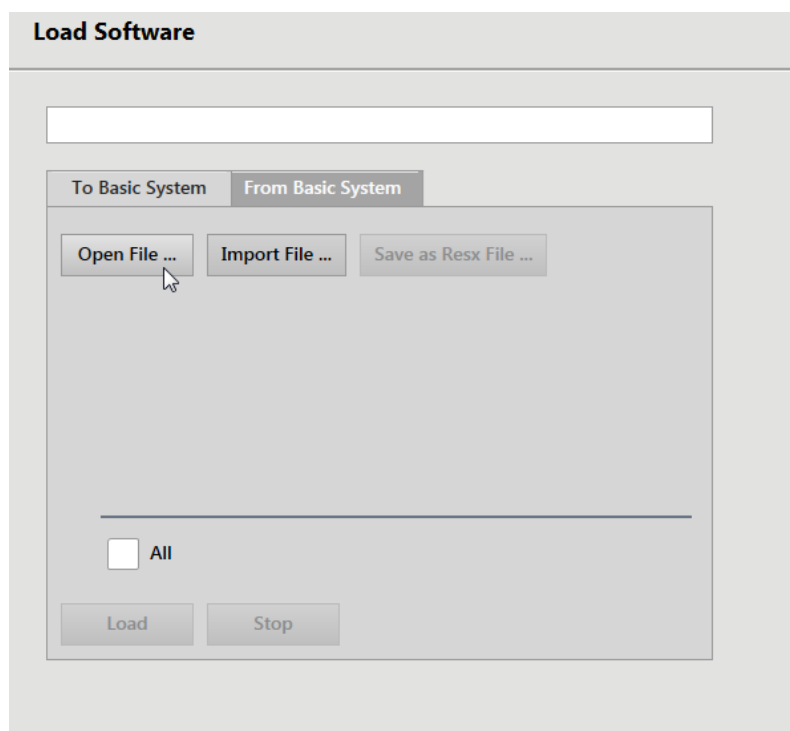


4. Browse after the embedded software

In order to browse the expected file, please click on “Basic System” AddIn menu, then click on arrow linked to “Software” menu, and then click on “Load” menu.



Click on “To Basic System”, then click on “Open File...” button.

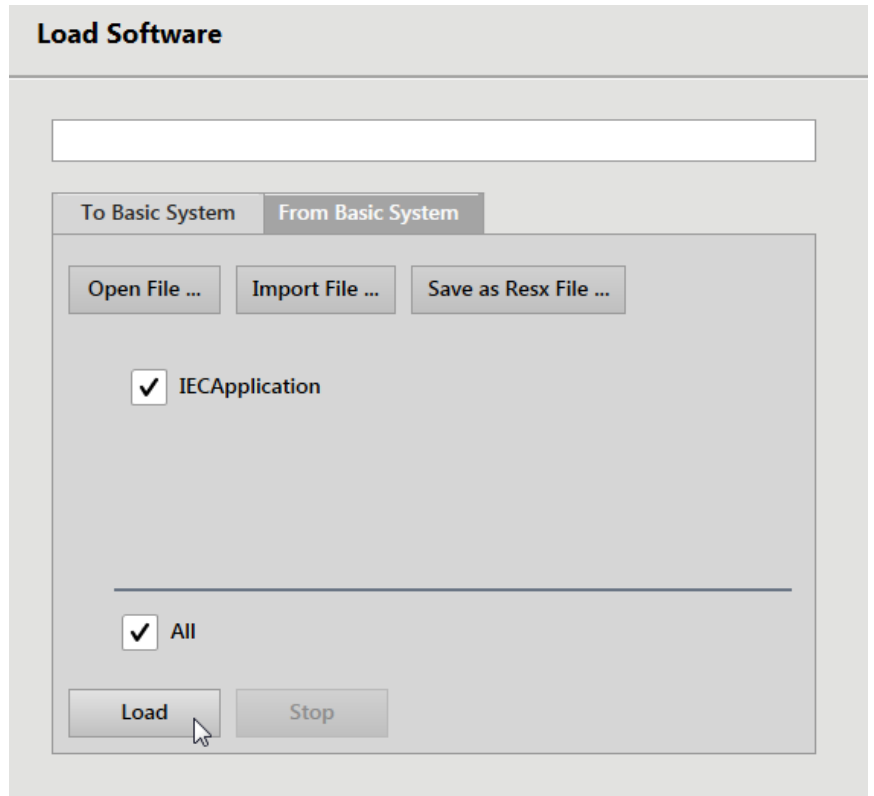


Remark: The RESX & the MD5 files must be in the same folder to download software.

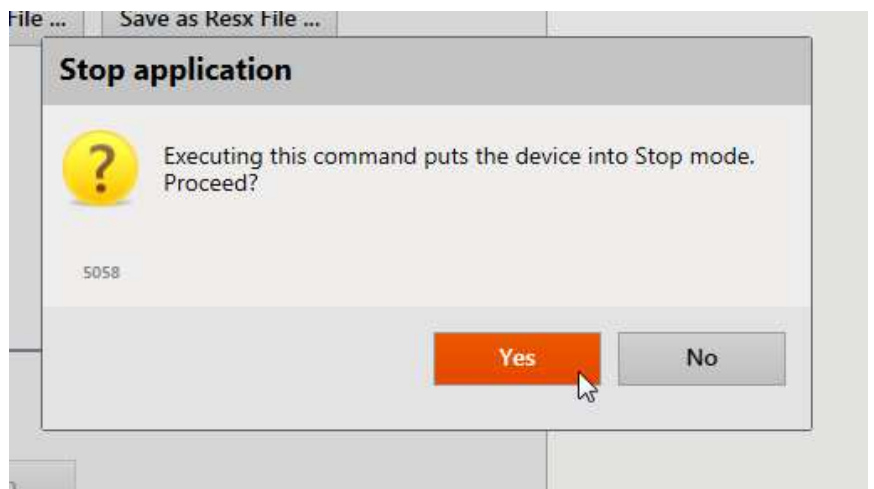
Browse the expected embedded software XxxxxxX-X.resx with a RESX file extension.



Then click on the "IECApplication" checkbox, then click on "Load" button.

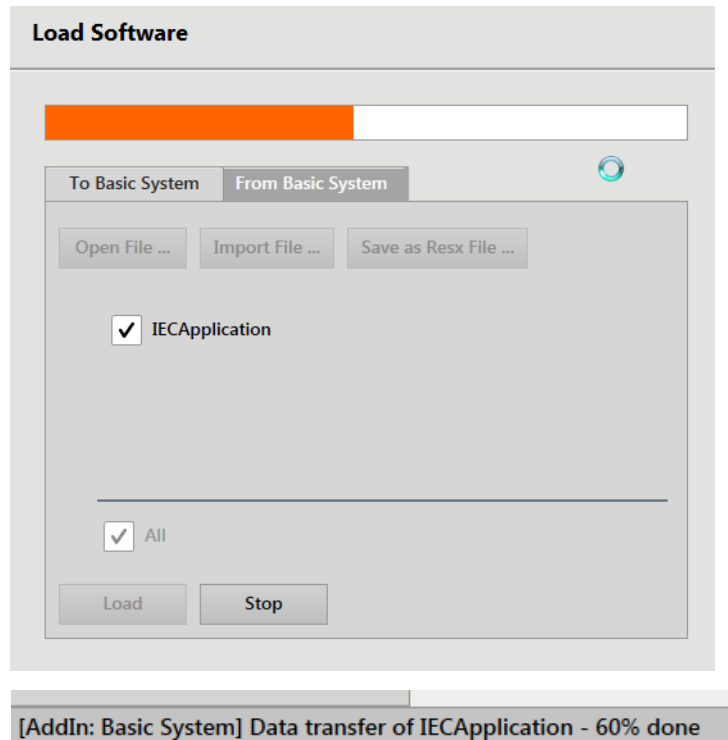


Then, accept request from Maintenance Tool, click on "Yes".

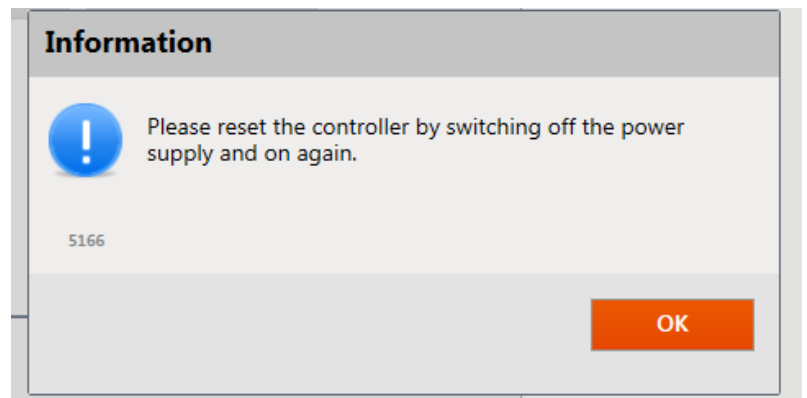


5. Software downloading

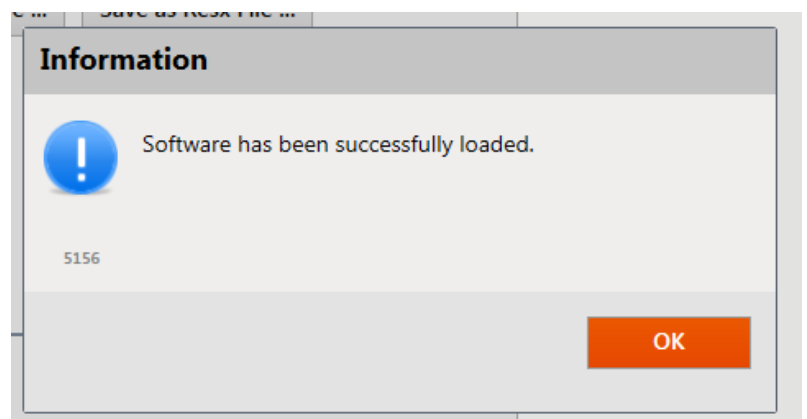
Please, wait before software download process.



At this step, switch Off the display during 3 seconds, then switch On, then click on "OK".



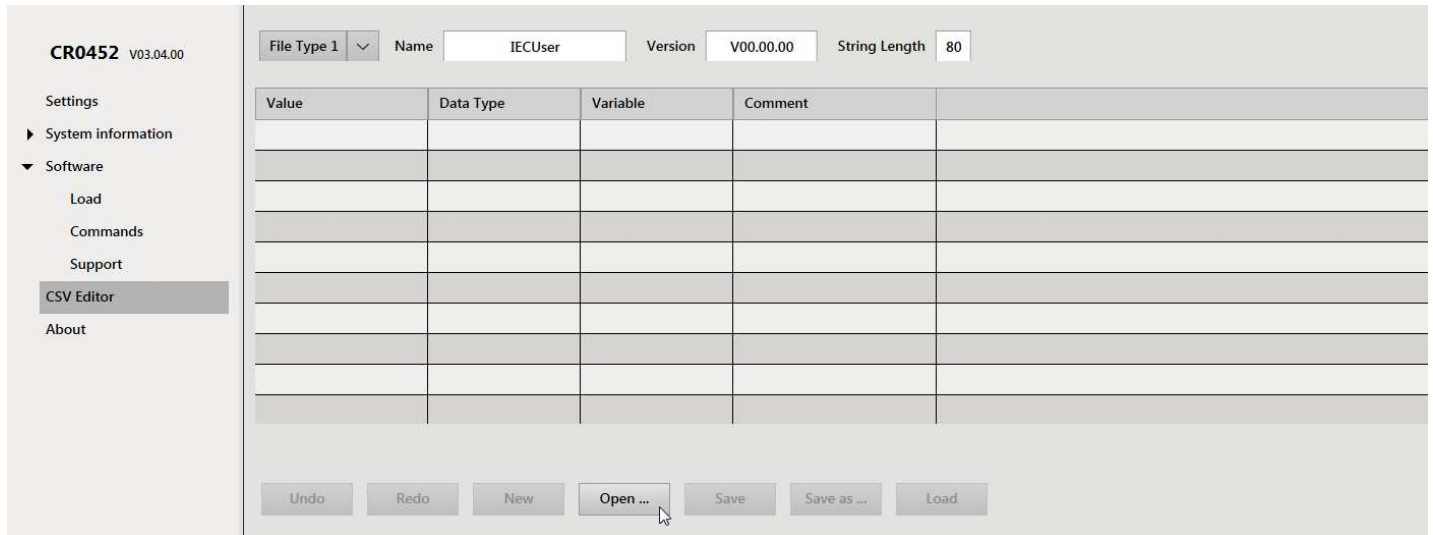
Click on "OK" button.



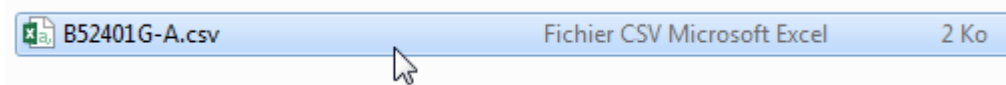
6. Browse & Download translation file

After the software downloading, the display needs a translation file for running correctly.

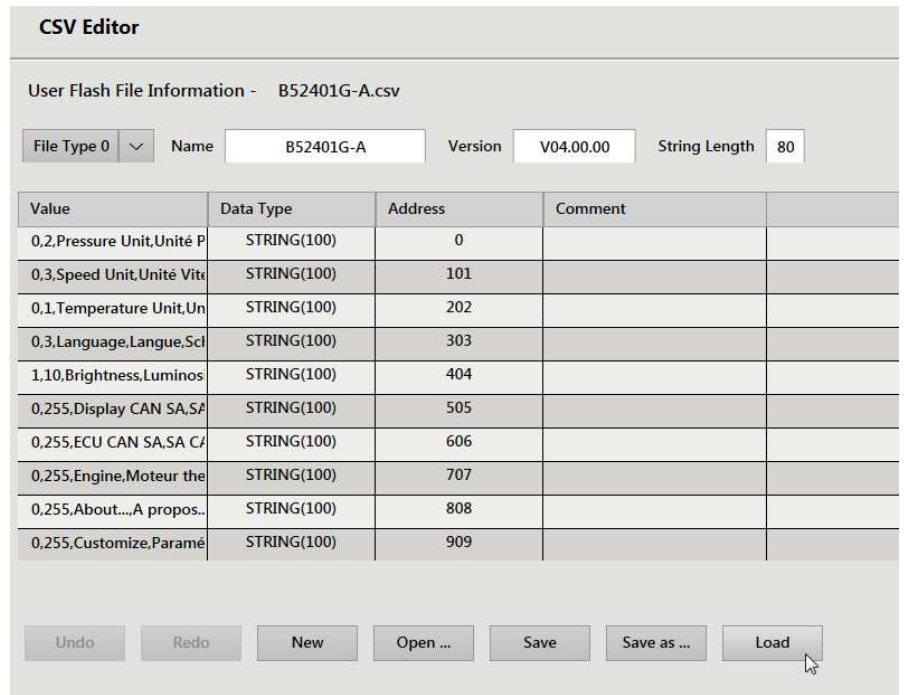
Click on “CSV Editor” menu, then click on “Open...” button.



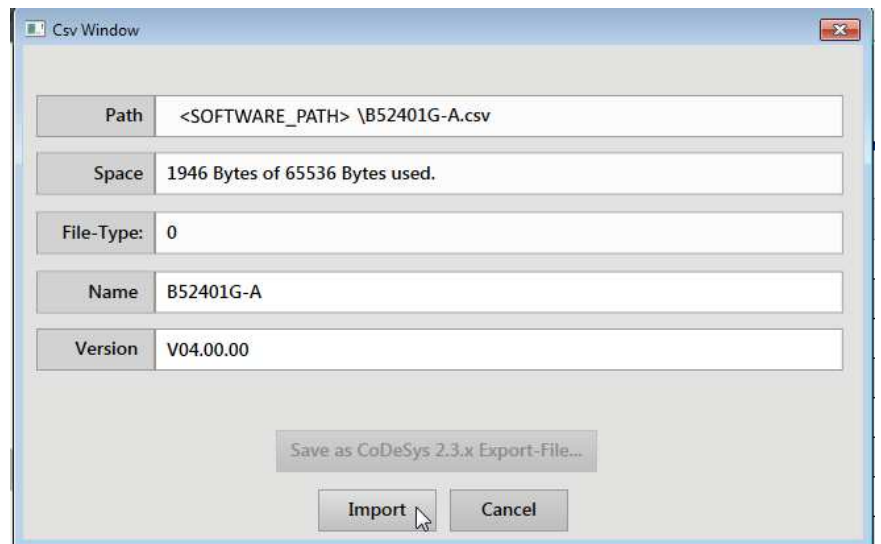
Browse and select the expected CSV file linked to your application.



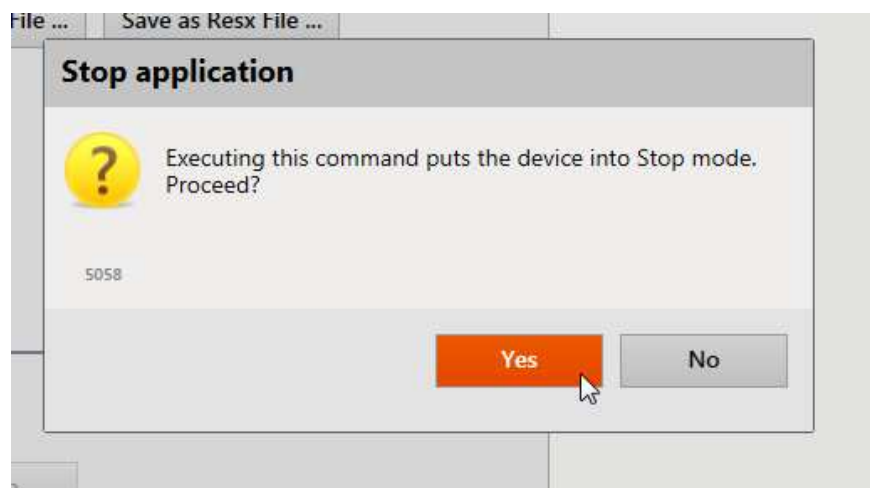
Once the CSV file is loaded, click on “Load” button.



Click on “Import” button

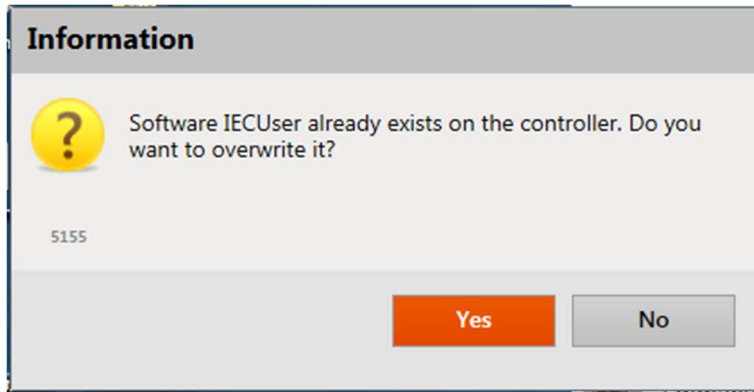


Then, accept request from Maintenance Tool, click on “Yes”.

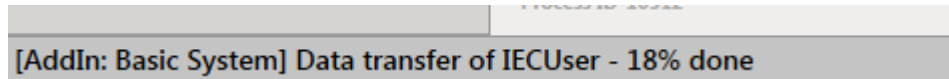




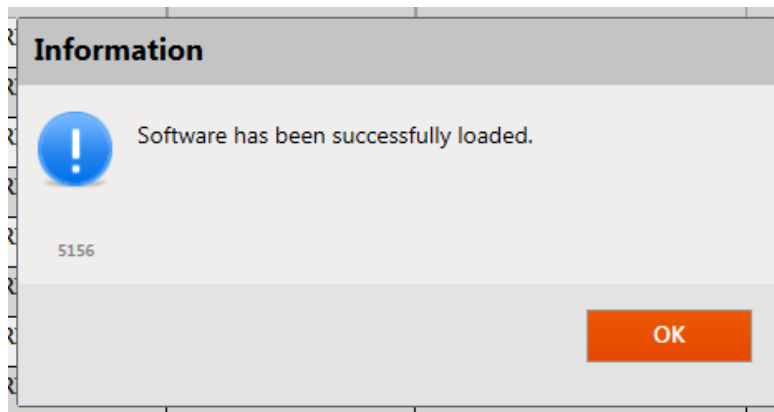
Remark: If you have already download a software before, this window can appear. Then click on OK.



Wait for the end of the download of translation file, percentage in status bar.



Once translation file is loaded, click on "OK" button to confirm the transfer.



At the end, switch Off the display during 3 seconds, then switch On.



Congratulations !!

The Poclain Hydraulics CR0452 display is ready from being used.



Documentations

Read our online documentation on Poclain-Hydraulics web site:

<http://www.poclain-hydraulics.com/>



Support

Feel free to contact Poclain-Hydraulics software support at:

support.phases@poclain.com



Download Center

Web site to download all of installer at:

<http://phases.poclain-hydraulics.com/downloadcenter/>